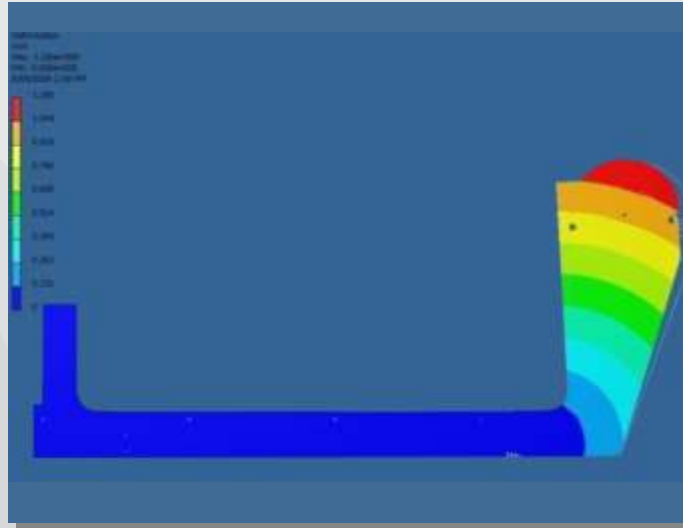


## If Coating Application Determines to your future profitability

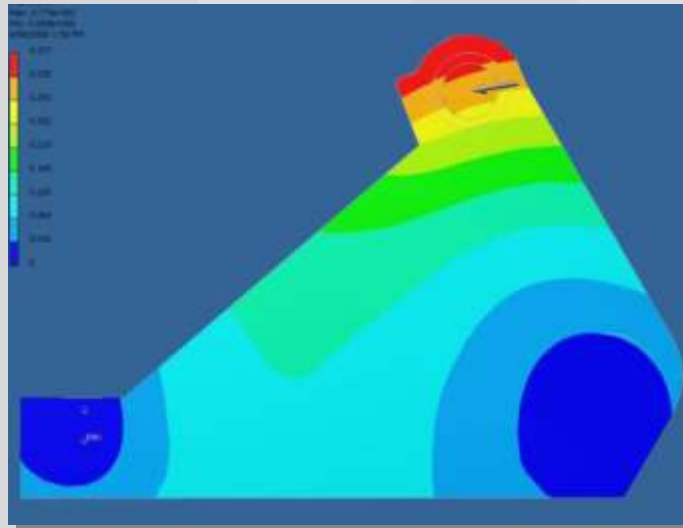
Are you relying on 50 year old technology like this.....



CONVENTIONAL Coater - Roll Support Slide

OR...

the most rigid and repeatable roll support system available like this?



LINK COAT<sup>®</sup> Coater - Roll Support

- ✓ **Rigidity....**the fundamental weakness in Stacked Slide or Single Slide Coater designs.
- ✓ **Repeatability....**the quality goal of any coating operation.
- ✓ **Retrofits....**the most cost effective head replacement upgrade.
- ✓ **Returning Customers....**the most important "R" for profitability.

Fitch Metals Engineering of Sydney, Australia (FME) increases the industry capability in all these areas with *Precision Load Cells* on *Manual or Servo-Controlled Link Coat<sup>®</sup>* coaters for Resin, Chemical, Lacquer, Acrylic and Wax Coatings in S-Wrap, Vertical, U-Wrap, C-Wrap coater configurations.